

## PRESS RELEASE

### Furuno's GP1871F & GP1971F Can Now Navigate With Navionics

Furuno has announced that Navionics cartography is now available on their GP-1871F and GP-1971F combination Chart Plotter/Fish Finder units. With the free version 4.0 software, which is a free upgrade available for download, features such as satellite photography overlay, refined depth contouring and relief shading, bathymetric layers, and enhanced viewing angles, including 3D and Panoramic modes, can all be utilized with Navionics cartography. Plus, users can quickly and easily update the chart content using the Navionics Chart Installer app for PC.

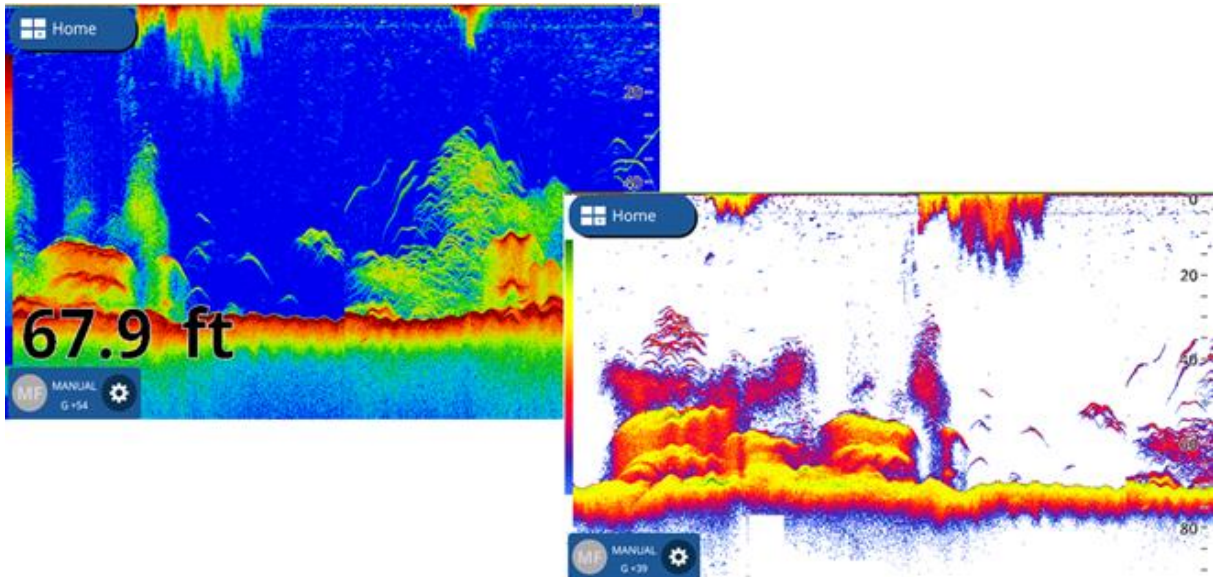


With their generous 7" and 9" wide-aspect displays, you'll see all of the rich Navionics cartography in a crystal-clear presentation. The all-glass, multi touch displays give you access to every feature via convenient and intuitive slide-out menus, similar to Furuno's TZtouch3 MFDs. Edge Swipe down from the top of the display to select Quick Pages, including your favorite custom display modes. Edge Swipe from the left to view customized Data Boxes. Edge Swipe from the bottom to quickly adjust your layer settings. Finally, Edge Swipe in from the right to access the menu functions you use the most. Everything is intuitive and contextual, so menu content relates to the current display mode. You can even tap or double tab the display with two fingers to capture a screenshot or perform other user-customized functions!

Radar can be overlaid onto the chart via a wireless connection to the Furuno DRS4W 1st Watch Wireless Radar. The DRS4W's wireless configuration makes it a breeze to add the compact 19" Radome to any vessel. The DRS4W can also display the Radar presentation on a connected smartphone or tablet, offering a significant upgrade in safety and versatility. When connected to an AIS receiver, you can see valuable AIS data overlaid on your chart.

# FURUNO

Also available in this software update are new color scheme options for the combo units built-in TruEcho CHIRP™/CW Fish Finder, as well as a new feature called Color Range Expansion, which helps distinguish strong fish echoes from the bottom or when a large school of fish is detected.



The GP-1871F and GP-1971F Combo units, now with a wider choice of cartography, allow captains of any size vessel to take advantage of Furuno innovations.