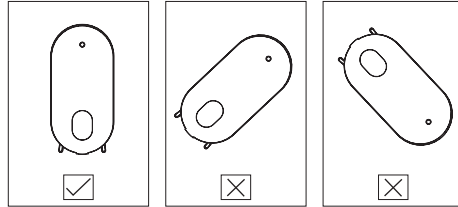


## ⚠ Precautions

1. After installation, please keep the machine vertical, tilted or turned will cause oil leakage and damage the machine.

2. If you are not a technician, you are not allowed to modify or disassemble or repair the machine, if the machine fails to work, please promptly contact our related technicians.



## Cleaning Machine

The machine needs to be cleaned when

1. Prepare to use different essential oil
2. the amount of atomization is getting weaker

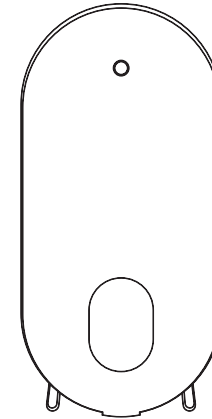
Cleaning steps

1. Open the machine door and remove the essential oil bottle
2. Pour an appropriate amount of industrial alcohol into the essential oil bottle and install it on the device. Connect the power and turn on the device for 5-10 minutes, to prevent different scents from mixing together.
3. After drying, finish cleaning

## Troubleshooting

Problem failure	Solution
No fog	<ol style="list-style-type: none"> <li>1. Check if the power is on</li> <li>2. Check whether the machine is in the status of "out of service"</li> <li>3. Check if the air pump works and whether the capacitor voltage is less than DC12V or change into new batteries.</li> <li>4. Check if the outlet pipe seal is damaged or falling off</li> </ol>
Atomization is small	<ol style="list-style-type: none"> <li>1. Check whether the atomizing outlet pipe seal is damaged</li> <li>2. Check whether the atomizing core cover inside the atomizing head is loose.</li> <li>3. Check if the atomizing nozzle is damaged</li> <li>4. Check whether the capacity voltage is less than 3W or change into new batteries.</li> </ol>
Oil leak	<ol style="list-style-type: none"> <li>3. Check if the atomizing nozzle is damaged</li> <li>2. Whether the atomizing head cover is not sealed</li> </ol>
Abnormal noise	<ol style="list-style-type: none"> <li>1. Check if the air pump is loose</li> <li>2. The air pump is damaged, replace it with a new one</li> </ol>

# PRODUCT MANUAL



## Working Time Display

Mist Volume Level					
Level	Working Time	Pause Time	Level	Working Time	Pause Time
1	5s	300s	11	65s	60s
2	15s	250s	12	70s	55s
3	25s	200s	13	80s	50s
4	30s	150s	14	90s	45s
5	35s	120s	15	100s	40s
6	40s	100s	16	120s	35s
7	45s	90s	17	150s	30s
8	50s	80s	18	200s	25s
9	55s	70s	19	250s	15s
10	60s	65s	20	300s	5s

## Parameter

Product name: JC-500

Coverage up to 600m<sup>3</sup>

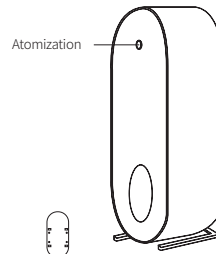
Voltage: DC12V or 3 D-size batteries

Total power:5W

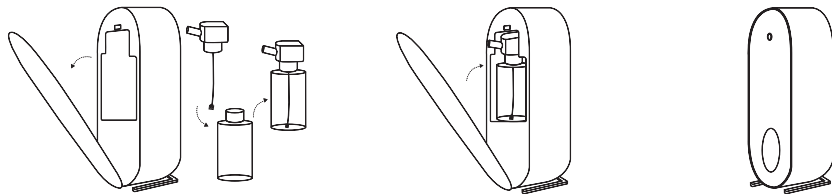
Essential oil capacity: 350ML

Product Size: L110\*W75\*H220MM

Accessories



## Essential Oil Installation Steps



1. Open the top cover downwards, Install essential oils

2. Hold the nozzle head, put the installed essential oil bottle into the device and cover the lid upwards.

3. When use the electricity power, power the device on with the provided USB cable; when use the batteries for power, install 3 D-size batteries into the device.

## Instructions

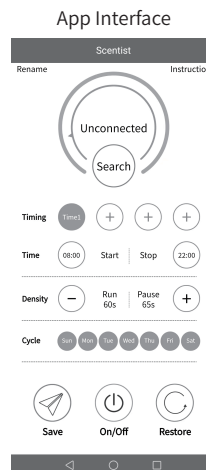
Download the APP **Scientist** in Google Play /App Store by directly searching **Scientist**, then turn on the APP**Scientist**, click Search to connect to the device (please turn on the Bluetooth and GPS in your cell phone first)

1.After the power is turned on, when the Bluetooth is connected, the blue light in the device is always on; if you have finished setting the automatic working time and during the set working time, device mists, then blue light flashes, pause, then red light flashes; out of the set working time, red light always on.

2.The buzzer will sound once when power or Bluetooth is successfully connected

3.After the device setting is completed, click SAVE in your cell phone APP, and the buzzer will sound 2 times continuously.

4.When you short press the ON/OFF button on the device, beep once means device starts working; beep twice means device pauses.



## Default Working Timing Set

### ★ Timing Setting

There are 4 timing setting programs. You need to set them one by one, after completed setting each one, SAVE first and then proceed for the next program setting. If you do not set anything, the machine will run at the defaulted procedure Time 1, which is start working time at 08:00 local time, and stop working time at 22:00 local time. \*After connected with your cell phone, the device will work with the time your cell phone shows, hence it works in your local time.

### ★ Mist Volume (Fragrance Density Level)

There are 20 levels of the mist volume(Fragrance density). When machine is running at the default mist volume level, there is a 5S pause after 250S working.

### ★ Working(Cycle)

Default cycle is from Monday to Sunday. The machine will run every day.

### ★ Save

When you finish all the setting, do click the Save button to make sure the device received all the information, and will work as per your setting.

### ★ On/Off Switch

Short press the On/Off, the machine will stop working; short press it again, it will work as per your setting.

### ★ Restore

Long press the Restore button, machine will be restored to the original status.

Function Explanation Remarks: Function marked with circle is optional.

(The fragrance density and working cycle could be adjusted/reset when the machine is in the status of timing 1.)