



MarineTouch Pro6

Precision Control at Your Fingertips

Step into next-generation boat control with the MarineTouch Pro6, a robust aluminum switch panel featuring six fully configurable piezo touch buttons with vibrant RGB ring illumination. Built for the marine environment, the Pro6 gives you full flexibility to control and customize essential onboard functions — from lights to pumps and beyond — with seamless integration into both new and retrofit systems.

With no moving parts, superior water resistance, and a sleek modern finish, the MarineTouch Pro6 delivers reliable performance and stunning visual feedback, transforming every touch into total command.

Key Characteristics

- **Configurable Brilliance:** Illuminate your journey with 6 dynamic ring illuminated piezo touch buttons, each with RGB ring LEDs. Immerse yourself in a spectrum of control possibilities.
- **Seamless Integration:** Unleash the power of retrofitting with ease as it seamlessly integrates into your existing setup, modernizing your control infrastructure effortlessly.
- **Effortless Precision:** Control with a simple touch. Utilizing advanced piezo touch technology, the switch panel responds whether activated by hand, glove, or tools.
- **Versatile Switching:** From momentary to toggle, prolonged to continuous, timer to programmable modes, our switch panel adapts to your unique operational needs.
- **Built to Endure:** With no moving parts, it defies the harshest marine environments, ensuring uninterrupted performance and longevity for your critical operations.
- **Your Vision, Your Design:** Personalization at its finest. Customize your control panel to match your vessel's identity. Choose optional laser engravings for a touch of exclusivity.
- **Ultimate Protection:** Embrace the elements. With an IP69K Front rating, our switch panel is impervious to water and dust, safeguarding your operation in all conditions.



Electrical Data

Operating Voltage	12V DC @ 1A
LEDs - Internal Color	Switch Off - Blue LED On Switch On - Red LED On
Switch Function	Standard: Toggle (On/Off) for 4 keys + 2 keys up to 5 sec. Optional: Momentary, Continuous

Mechanical Data

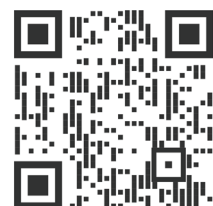
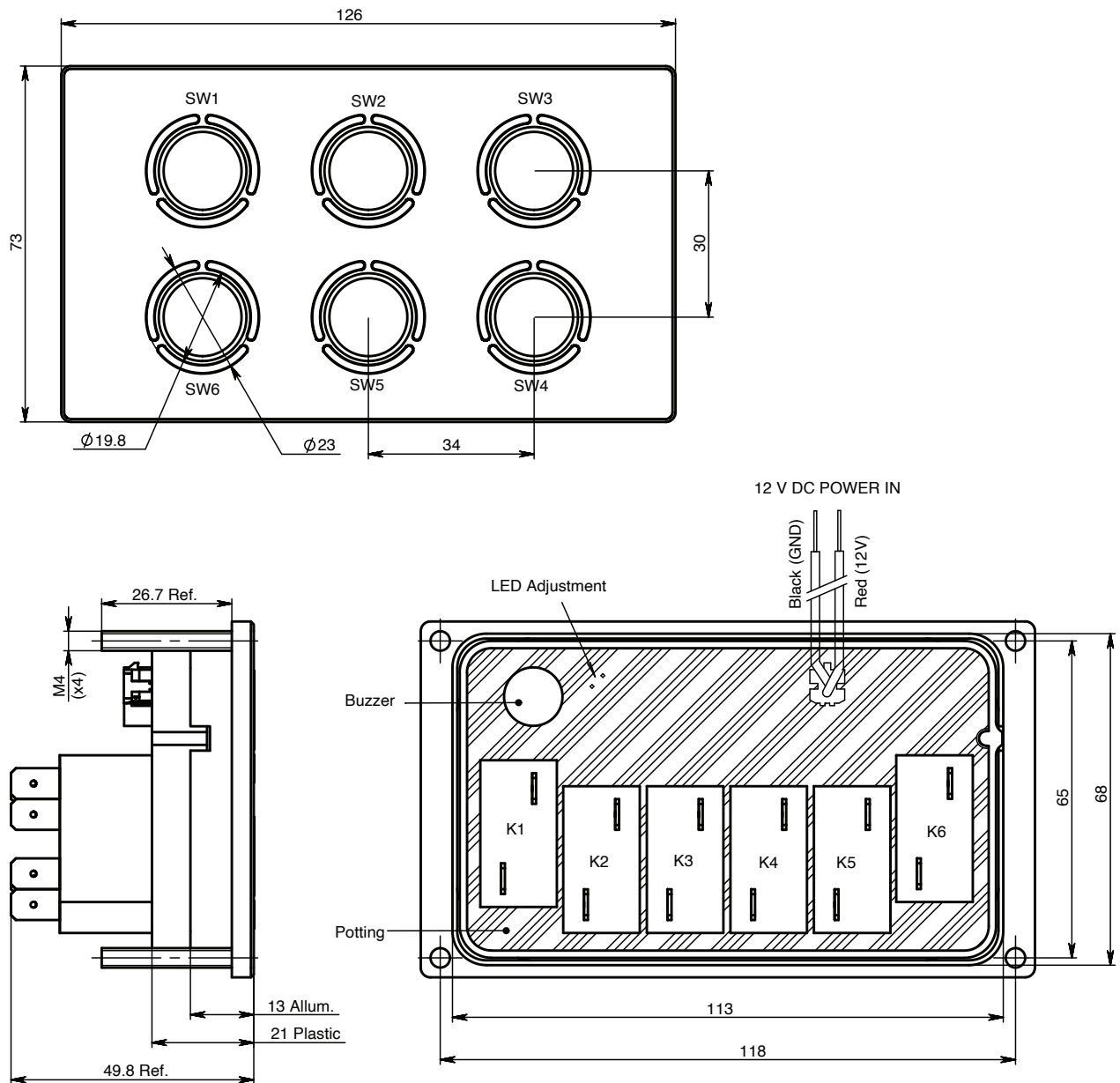
Housing Materials	Aluminum 6061 T651
Connection	2 Wires 22 AWG, Length 300mm
Actuation Force	3-7 N
Relay Dry Contact	SPST, N.O.250Vac @ 20A
Finish	Black Anodize Optional Laser Engraving

Environmental Data

Operating Temperature	-15°C to +55°C
Storage Temperature	-40°C to +70°C
IP Rating	Front Panel IP69K



Mechanical Drawing



*The specifications, descriptions and illustrations indicated in this document are based on current information. All content is subject to modifications and amendments. Users should evaluate the suitability and test each product selected for their own applications.